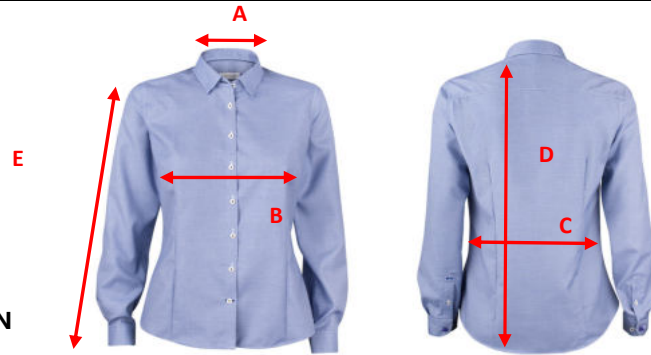




J. HARVEST & FROST
CORPORATE SHIRTMAKER

SIZE CHART



Brand: J. HARVEST & FROST

Style: 2904803 PURPLE BOW 48 WOMAN

| | XS | S | M | L | XL | XXL | 3XL | 4XL |
|------------------------------------|-----------|-----------|-----------|-----------|-----------|------------|------------|------------|
| | 34 | 36 | 38 | 40 | 42 | 44 | 46 | 48 |
| A) neck | 38 | 39 | 40 | 41 | 42,5 | 44 | 46 | 48 |
| B) 1/2 chest width | 45 | 47 | 49 | 51 | 53 | 55 | 59 | 63 |
| C) 1/2 waist | 39,5 | 41,5 | 43,5 | 45,5 | 47,5 | 49,5 | 53,5 | 57,5 |
| D) body length from shoulder point | 64,5 | 66 | 67,5 | 69 | 70,5 | 72 | 74 | 76 |
| E) sleeve length | 59,5 | 60,5 | 61,5 | 62,5 | 63 | 63,5 | 64 | 64 |

All measurements are indicative with minimum tolerance of 1 cm